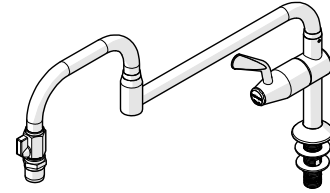


Ezy-Wash[®] CP-BS Lead Safe[™] Hob Mounted Pot & Kettle Filler Unit Type 70H with Folding Outlet + Stop

PRODUCT CODES:

- 181.04.10.01



SPECIFICATIONS

- Lever action handles
- All units are finished in bright chrome plate.
- Due to typical applications of this product, it has been designed as 0 star rated to allow fast pot filling.
- The identification buttons on the handles are standard and signify hot or cold water only. If water other than hot or cold is used (e.g. pre-mixed) then appropriate identification buttons will need to be purchased to replace those supplied on the standard unit.
- Lead Safe[™] brass construction.*

IMPORTANT: All Ezy-Wash[®] Food Service taps are tested in accordance with AS/NZS 3718 and leave our premises in good working order.

*Our Lead Safe[™] product range is compliant with the Lead-Free Requirements of the NCC 2022 Vol. Three, Clause A5G4(2) and NSF/ANSI 372.

**Any flow controller incorporated in the outlet to be tightened to prevent removal by hand. As Per AS3718.

WARNINGS: Special attentions to be paid on notes, photos, images, or drawings of assembly steps marked with the warning symbol.



TECHNICAL DATA

| | | |
|--------------------------------|--------------|-----|
| Inlet | G 1/2"- Male | |
| Outlet | Aerator | |
| Headwork | Ceramic Disc | |
| Working Pressure Range (kPa) | Min | 50 |
| | Max | 500 |
| Working Temperature Range (°C) | Min | 5 |
| | Max | 65 |
| Construction | Brass | |
| Finish | Chrome | |

NOTE: Galvin Engineering continually strive to improve their products. Specifications may change without notice.

TOOLS REQUIRED

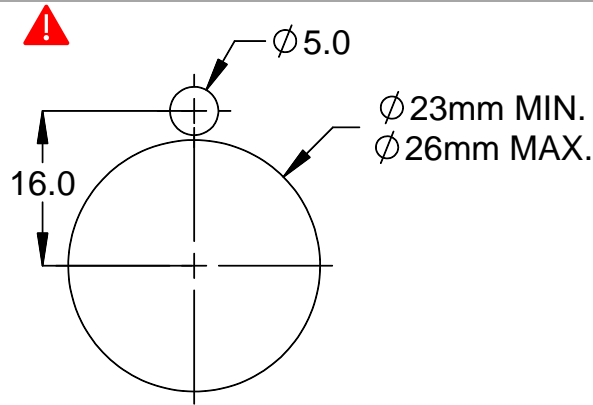
- Power drill
- Spanner or adjustable crescent
- Thread tape

PRE-INSTALLATION

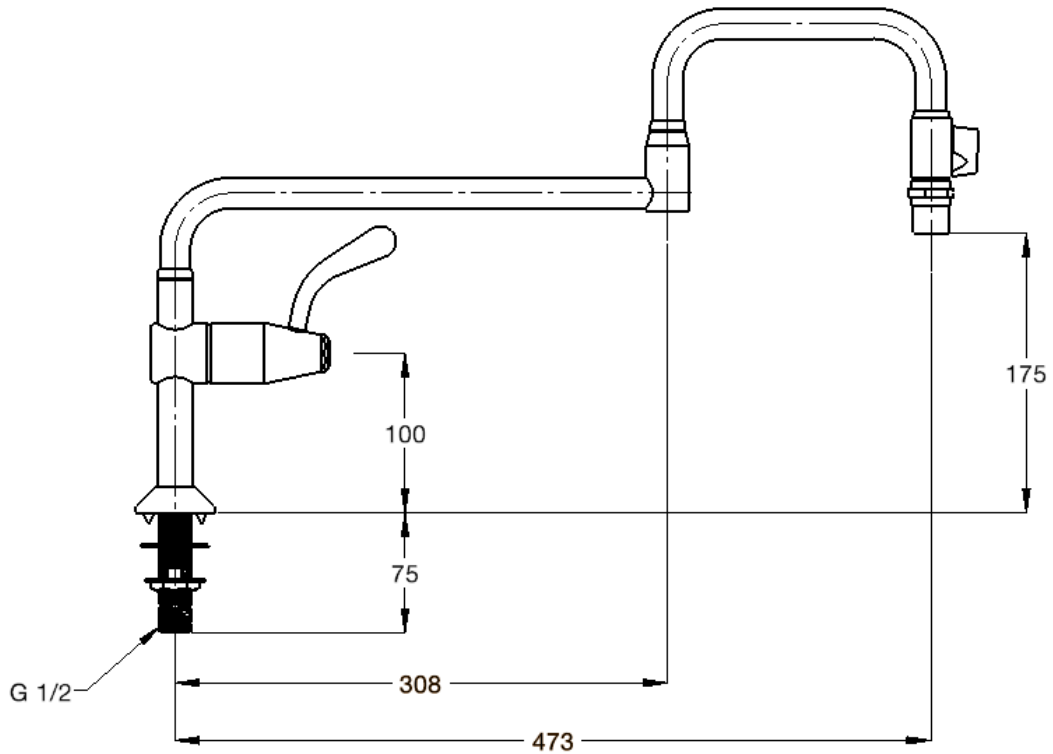
MOUNTING DETAILS – HOLE CENTRES

- If the mounting holes do not already exist, mark out and drill the holes in the bench/trough, as shown in rough-in dimensions.
- Ensure alignment of 5mm hole is as shown, as this will determine direction of water flow.

⚠ Note: Before installation, all lines must be flushed. We recommend that a line strainer be installed prior to food service taps to eliminate any foreign material.

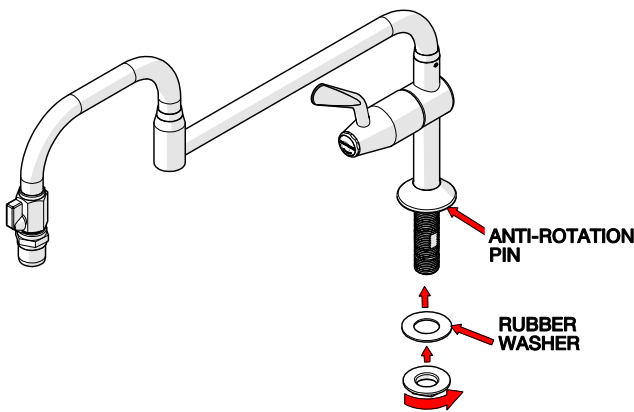


Rough-in Dimensions



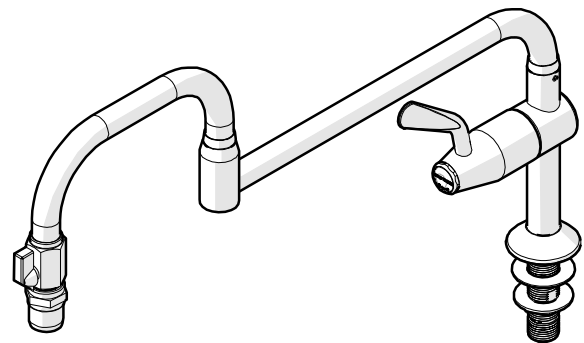
INSTALLATION

INSTALLATION COMPLIANCE: Galvin Engineering products must be installed in accordance with these installation instructions and in accordance with AS/NZS 3500, the PCA and your local regulatory requirements. Water and/or electrical supply conditions must also comply to the applicable national and/or state standards. Failing to comply with these provisions shall void the product warranty and may affect the performance of the product.



1. Fit tap assembly

- Fit the tap into the bench.
- Ensure the sealing rubber washer is placed underneath the tap body and the anti-rotation pin locates properly.
- Secure underneath with the supplied back nut.



2. Connect & Testing

- Connect mains water supply ensuring thread tape is used.
- Once the drinking tap has been installed, turn on the water supply and test the unit for leaks.

OPERATING INSTRUCTIONS

- The unit must be turned OFF at the base (not at the ball valve) whilst the unit is not in use, to ensure the unit is not under mains pressure when unsupervised. Flood damage may occur if a failure occurs whilst the unit is under mains pressure (warranty is void in this instance).
- Galvin Engineering recommends that the unit is periodically serviced by a qualified plumber and the swivel joints are regularly inspected to ensure grub screws remain secure.

TROUBLESHOOTING

| PROBLEM | CAUSE | RECTIFICATION |
|-----------------------------------|--|--|
| Inconsistent flow | Blocked top assembly | Remove top assembly and clean |
| Water is not flowing from the tap | Water is turned off | Turn on the water |
| Continuous flow | Top assembly loose or internally obstructed or damaged | Remove top assembly, clean with water and replace ceramic disc if required |
| Handle is loose | Screw has come loose | Tighten handle screw |

SERVICE AND MAINTENANCE

CERAMIC DISC TAPWARE

1. Turn off the water supply and turn on the tap handle to drain water from the bodies.
2. Remove the temperature indicator from the handle.
3. Remove the handle from the tap.
4. Unscrew the ceramic head part from the body.
5. Check the o-ring on the ceramic head part for wear and damage. Replace if required.
6. Clean the head part and the body of any debris.
7. Replace the cartridge and hand tighten back into the body.
8. Follow the product installation guidelines for the relevant product re-assembly method.

WARRANTY

Galvin Engineering products are covered under our Manufacturer's Warranty. Galvin Engineering products must be installed in accordance with the installation instructions and in accordance with AS 3500 and NCC Volume Three, relevant Australian Standards and local authorities applicable to product being installed. Water and electrical supply conditions must also comply to the applicable national and/or state standards, failing to comply with these provisions may void the product warranty and affect performance of the product.

Please visit www.galvinengineering.com.au to view the full warranty, our Installation Compliance and Maintenance & Cleaning information as well as any other additional information.